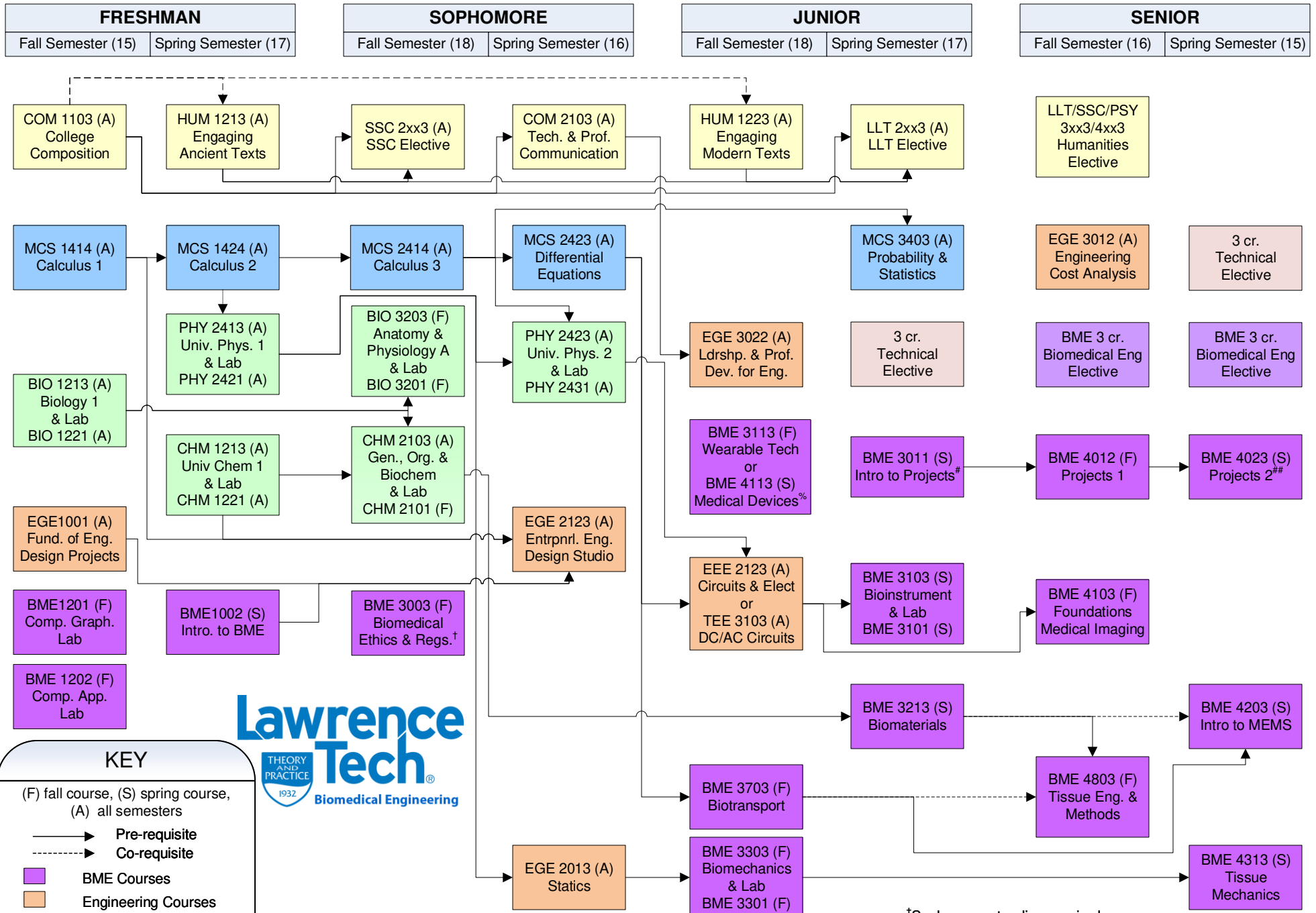


Bachelor of Science in BIOMEDICAL ENGINEERING PROGRAM Curriculum (132 Credits)

Approved 3/28/2024



KEY

(F) fall course, (S) spring course, (A) all semesters

→ Pre-requisite
 - - - - - Co-requisite

 BME Courses
 Engineering Courses
 Math Courses
 Science Courses
 Humanities Courses



†Sophomore standing required
 %Co-requirement with BME3103
 *Must be enrolled/have completed BME 3003 and at least two BME 3**3 courses
 Must be enrolled/have completed all BME 3* courses